

18. Chant des Moissonneurs

Album pour la jeunesse

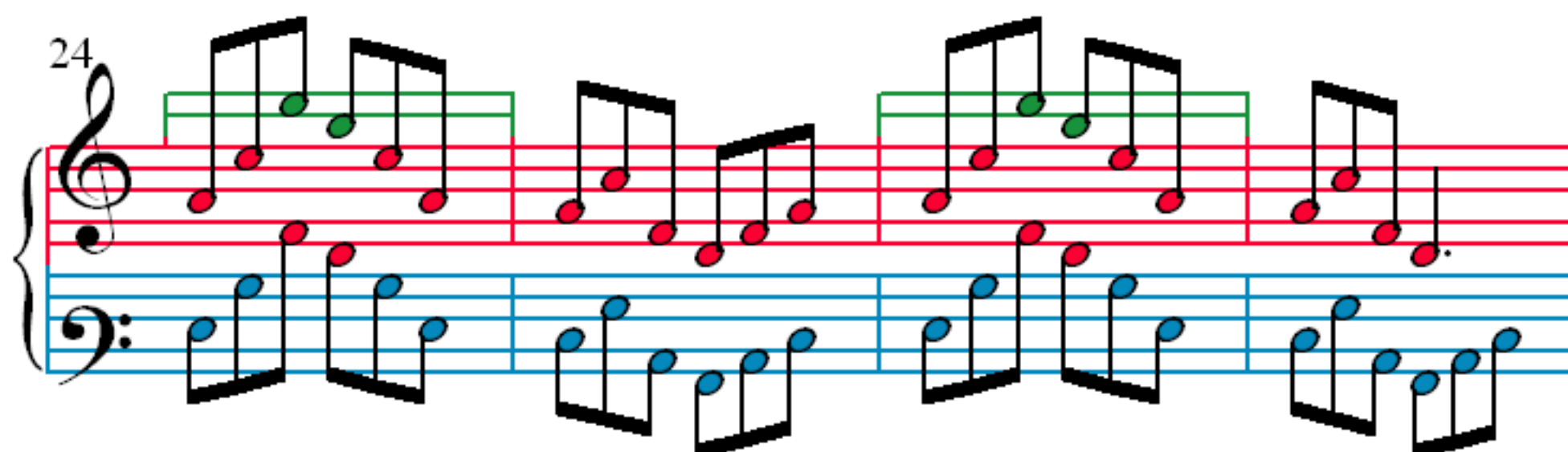
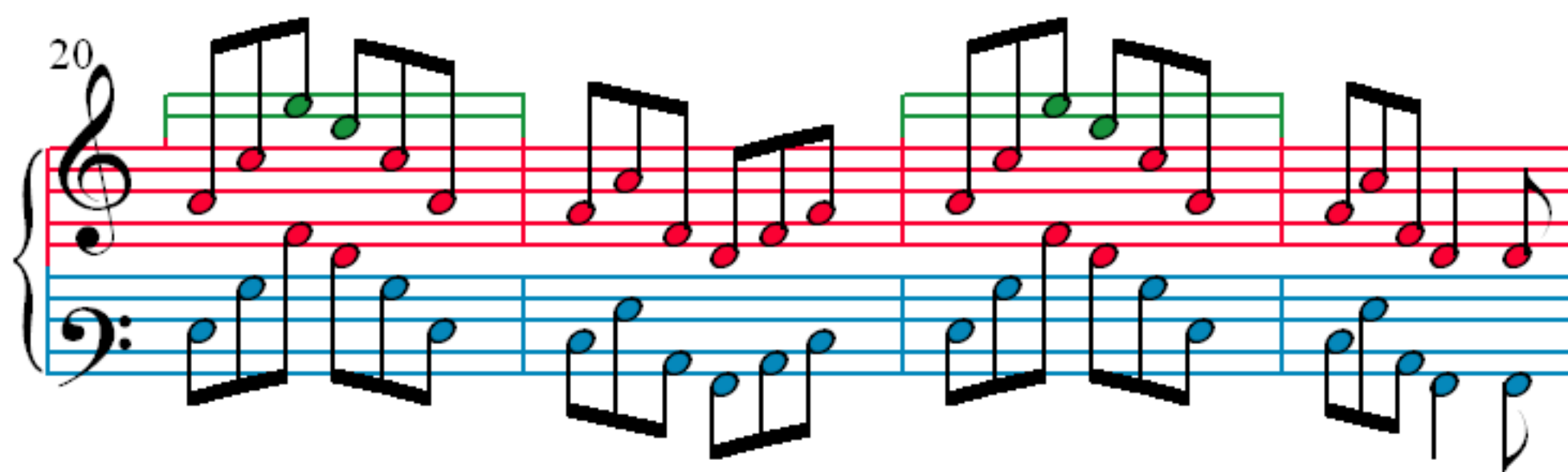
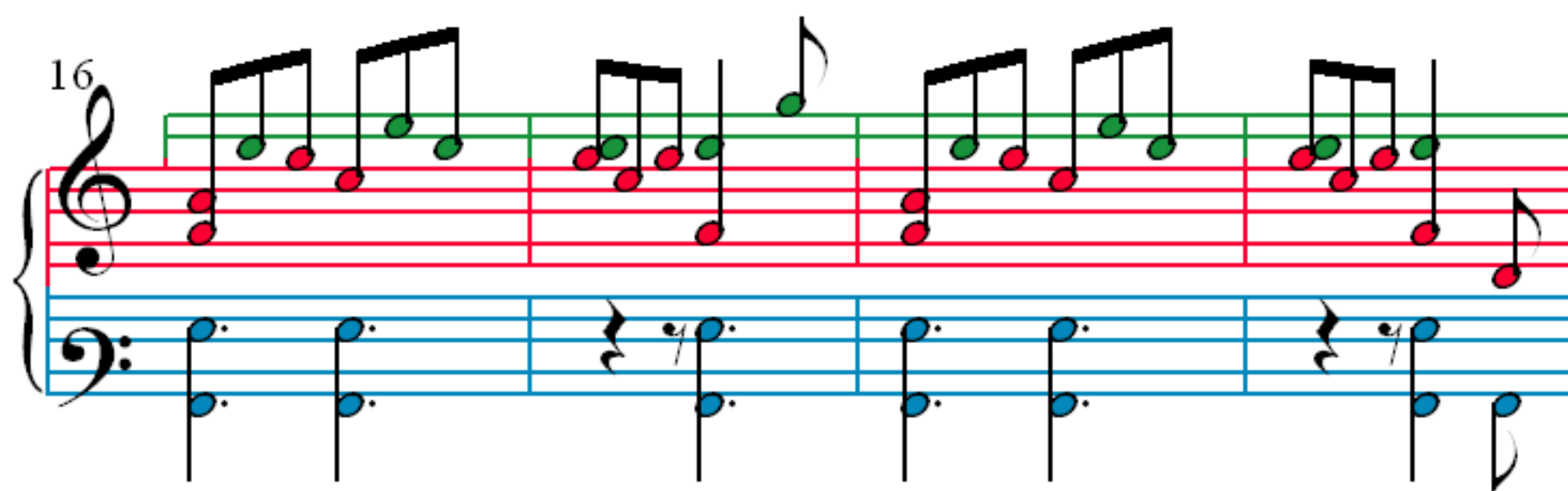
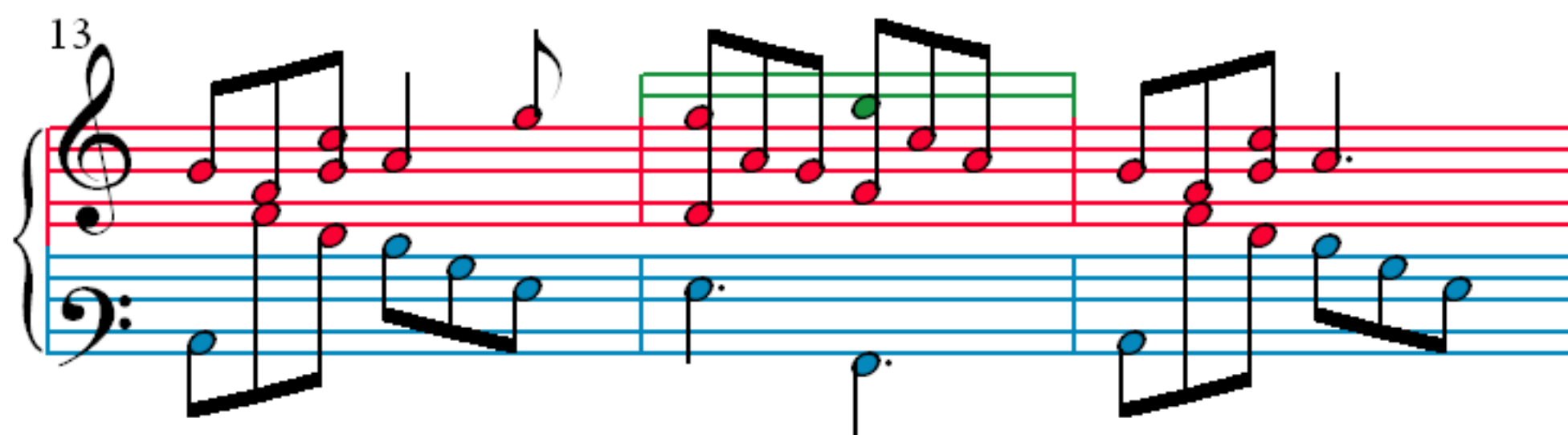
R. Schumann (1810–1856)

1

3

6

9



28

Measures 28-31: Treble clef contains green eighth-note chords. Bass clef contains red half notes and blue half notes with rests.

32

Measures 32-35: Treble clef contains green eighth-note chords. Bass clef contains red half notes and blue half notes with rests.

36

Measures 36-39: Treble clef contains green eighth-note chords. Bass clef contains red half notes and blue half notes with rests.

40

Measures 40-43: Treble clef contains green eighth-note chords. Bass clef contains red half notes and blue half notes with rests.