

Chim Chim Chiree

from Mary Poppins

Sherman Brothers

1

Measures 1-3 of the piece. The treble clef staff has a key signature of one flat (Bb) and a 4/4 time signature. The melody consists of quarter notes: G4, A4, Bb4, A4, G4, F4, E4, D4. The bass clef staff has a dotted half note G2 in measure 1, a half note F2 in measure 2, and a half note E2 in measure 3. The grand staff is color-coded with green for the treble staff, red for the upper bass staff, blue for the lower bass staff, and orange for the bottom staff.

4

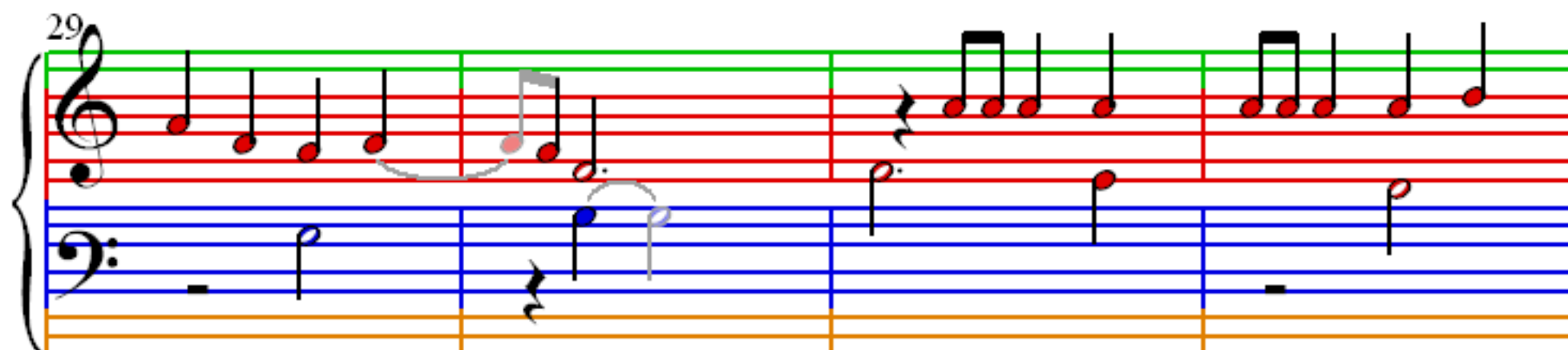
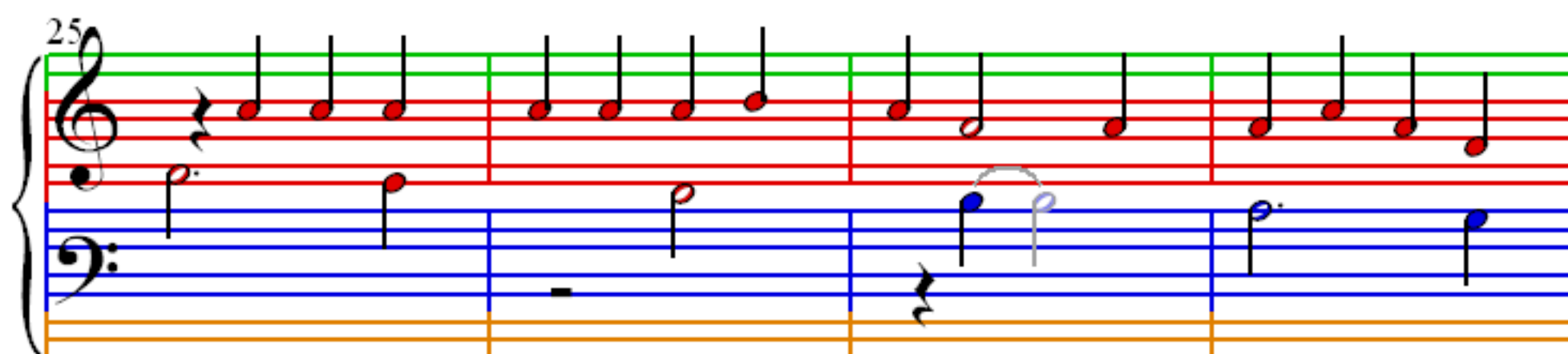
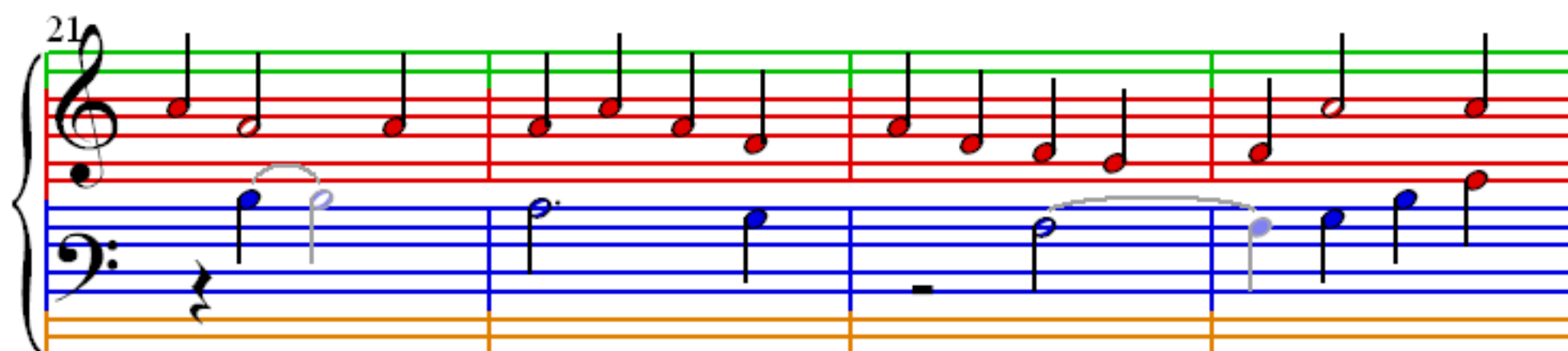
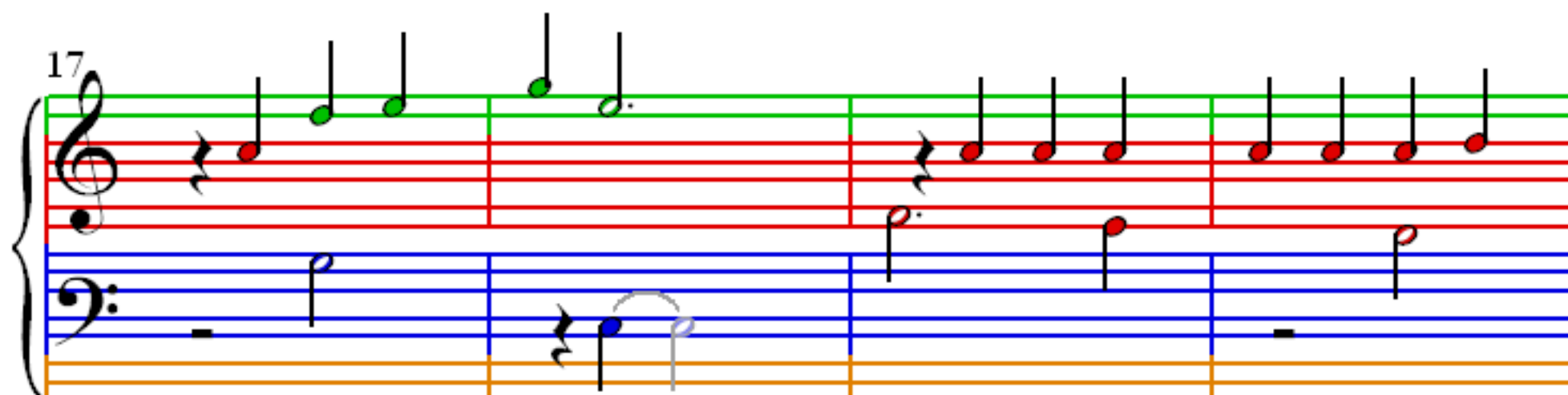
Measures 4-6. The treble clef staff continues the melody with eighth notes: D4, C4, Bb4, A4, G4, F4, E4, D4. The bass clef staff has a dotted half note G2 in measure 4, a half note F2 in measure 5, and a half note E2 in measure 6. The grand staff is color-coded with green for the treble staff, red for the upper bass staff, blue for the lower bass staff, and orange for the bottom staff.

7

Measures 7-9. The treble clef staff continues the melody with quarter notes: C4, Bb4, A4, G4, F4, E4, D4, C4. The bass clef staff has a dotted half note G2 in measure 7, a half note F2 in measure 8, and a half note E2 in measure 9. The grand staff is color-coded with green for the treble staff, red for the upper bass staff, blue for the lower bass staff, and orange for the bottom staff.

10

Measures 10-12. The treble clef staff continues the melody with eighth notes: C4, Bb4, A4, G4, F4, E4, D4, C4. The bass clef staff has a dotted half note G2 in measure 10, a half note F2 in measure 11, and a half note E2 in measure 12. The grand staff is color-coded with green for the treble staff, red for the upper bass staff, blue for the lower bass staff, and orange for the bottom staff.



33

37

41

45

49

